

Over the limb eventにおける高 エネルギー粒子の振る舞い

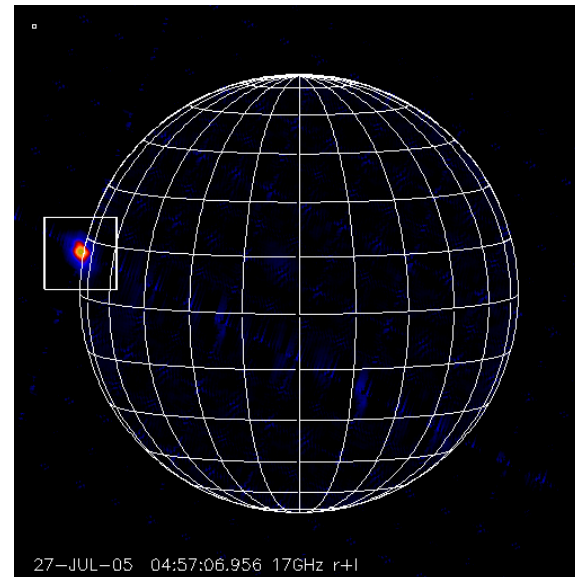
浅井、岡、西田、田中

目次

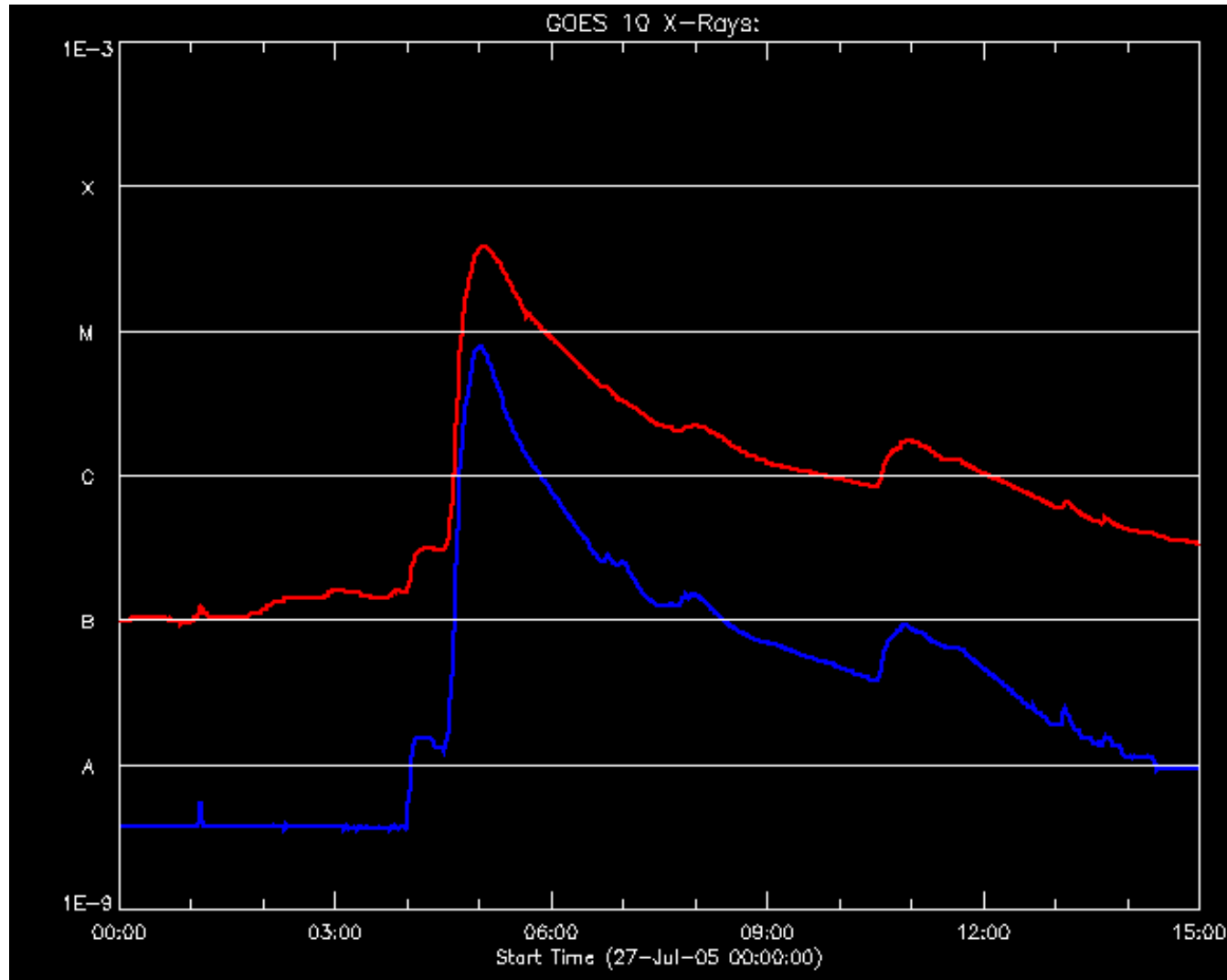
- [イベントの概要](#)
- Time profile
 - [GOES 10 X-Rays](#)
 - [NoRH correlation](#)
 - [NoRP Time Profile](#)
 - [RHESSI Observing Summary](#)
 - [RHESSI Count](#)
- Movie
 - [SMART T1 \(H Center\)](#)
 - [GOES/SXI](#)
 - [TRACE 171](#)
 - [EIT 195](#)
 - [SOHO/LASCO \(C2\)](#)
 - [SOHO/LASCO \(C3\)](#)
 - [NoRH 17GHz r+l](#)
 - [NoRH 34GHz r+l](#)
 - [NoRH alpha](#)
- Picture
 - [NoRH 17GHz timeslice \(1\)](#)
 - [NoRH 17GHz timeslice \(2\)](#)
 - [コロナ磁場](#)
- 解析
 - [NoRH・NoRP alpha, RHESSI gamma](#)
 - [Rhessi observation thermal\(3~12keV\) & Non-thermal\(30~100keV\)](#)
 - [Motion of hard X-ray sources](#)
 - [Rhessi & TRACE](#)
 - [Rhessi & SOHO](#)
 - [Rhessi & NORH 17GHz](#)
 - [Rhessi & NORH 34GHz](#)
 - [Rhessi & NORH](#)
 - [Imaging spectroscopy \(1\)](#)
 - [Imaging spectroscopy \(2\)](#)
 - [The spectrum of both loop top sources shows nonthermal component !!](#)

イベントの概要

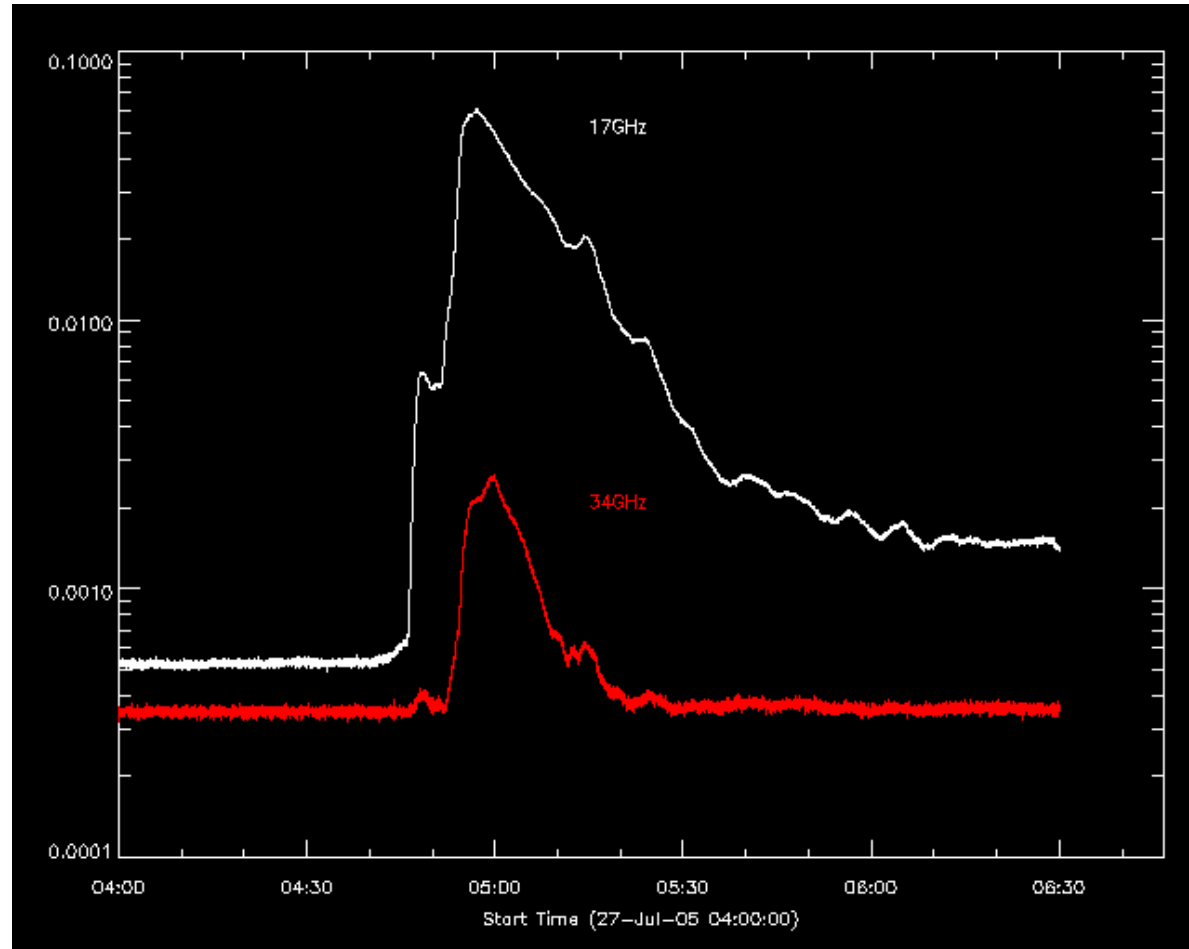
- 2005年7月27日 4:33-5:30 UT (M3.7)
- 東のlimbで発生 (NOAA 0786, N10E91)
- foot-pointはlimbに隠され見えない
- ejection 有



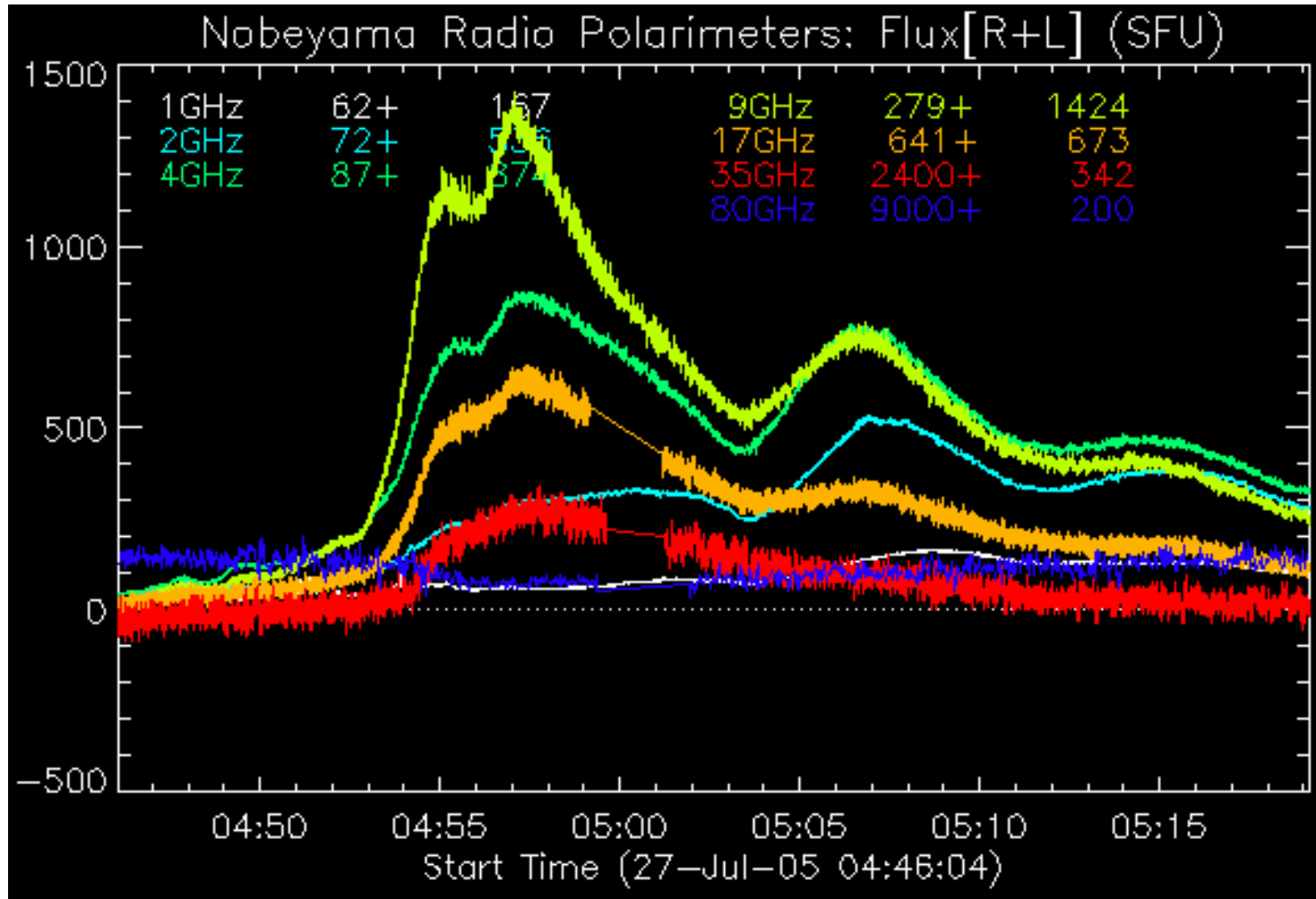
GOES 10 X-Rays



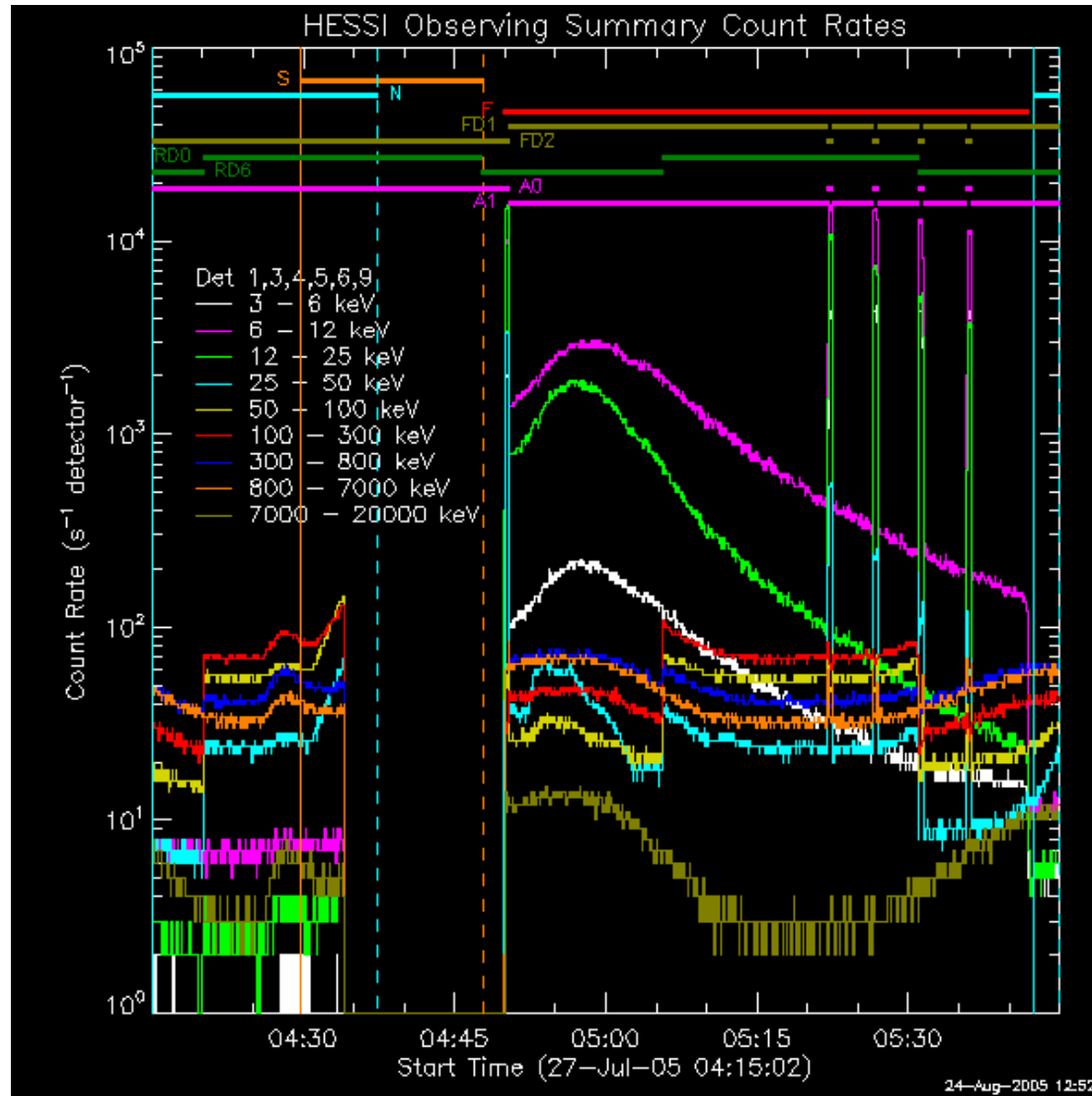
NoRH correlation



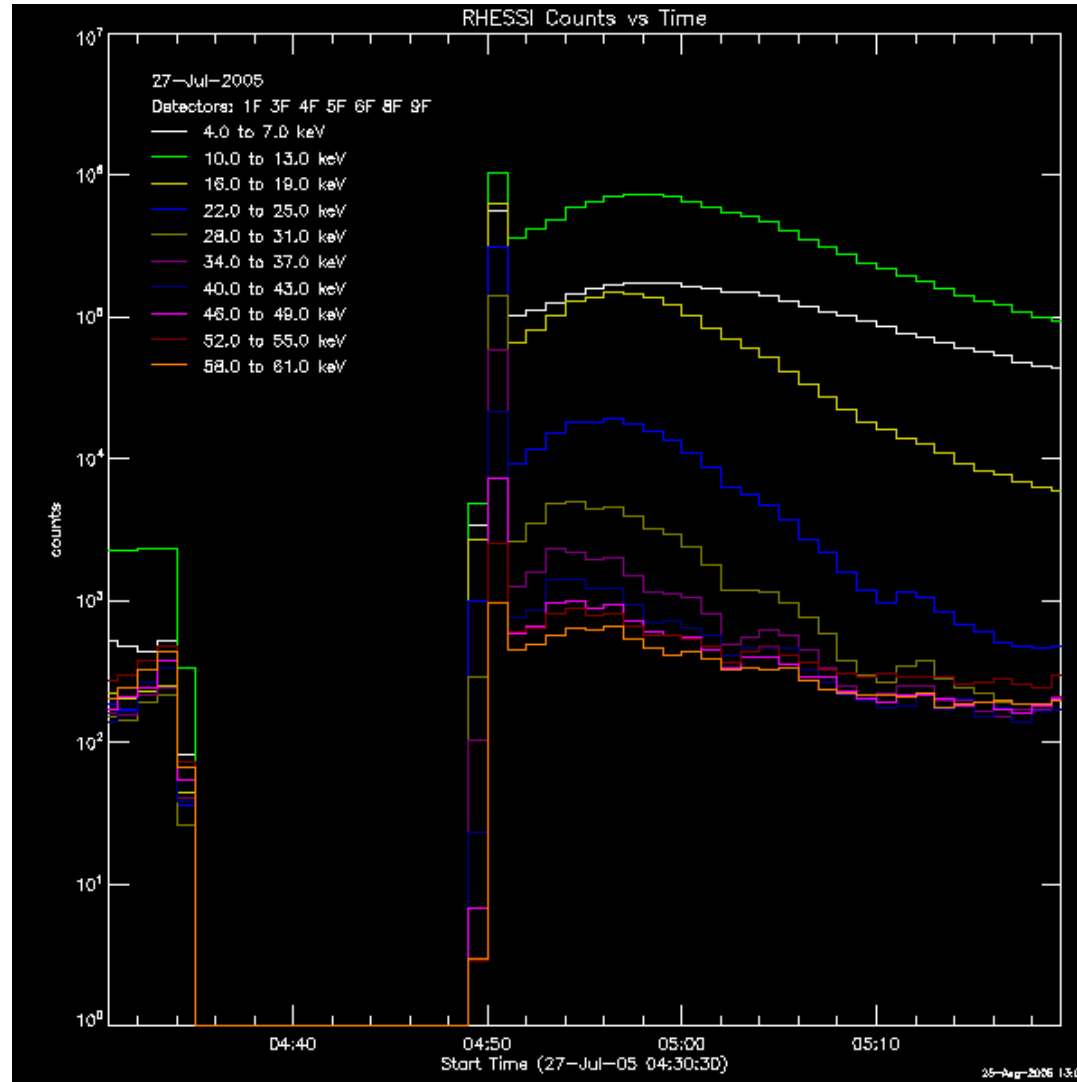
NoRP Time Profile



RHESSI Observing Summary



RHESSI Count

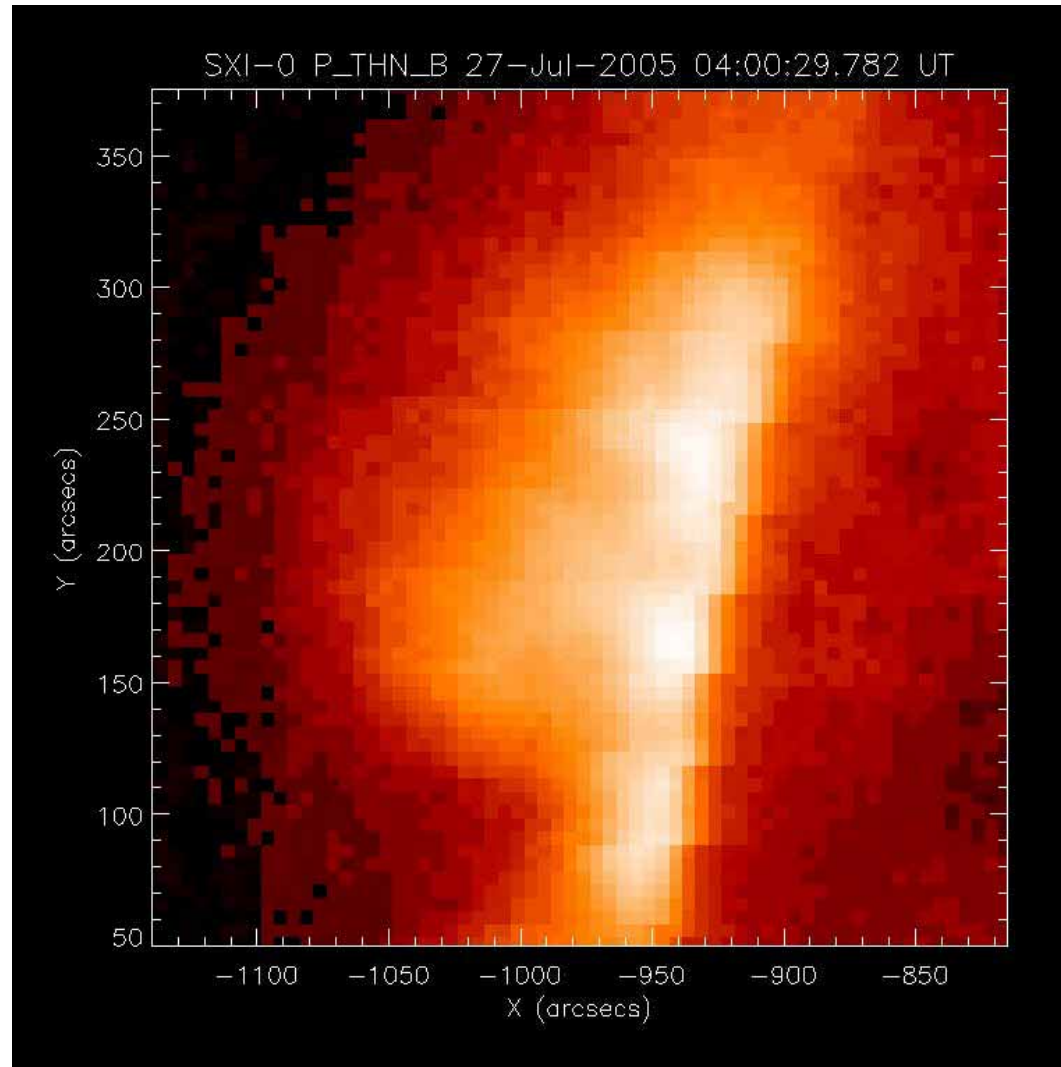


目次

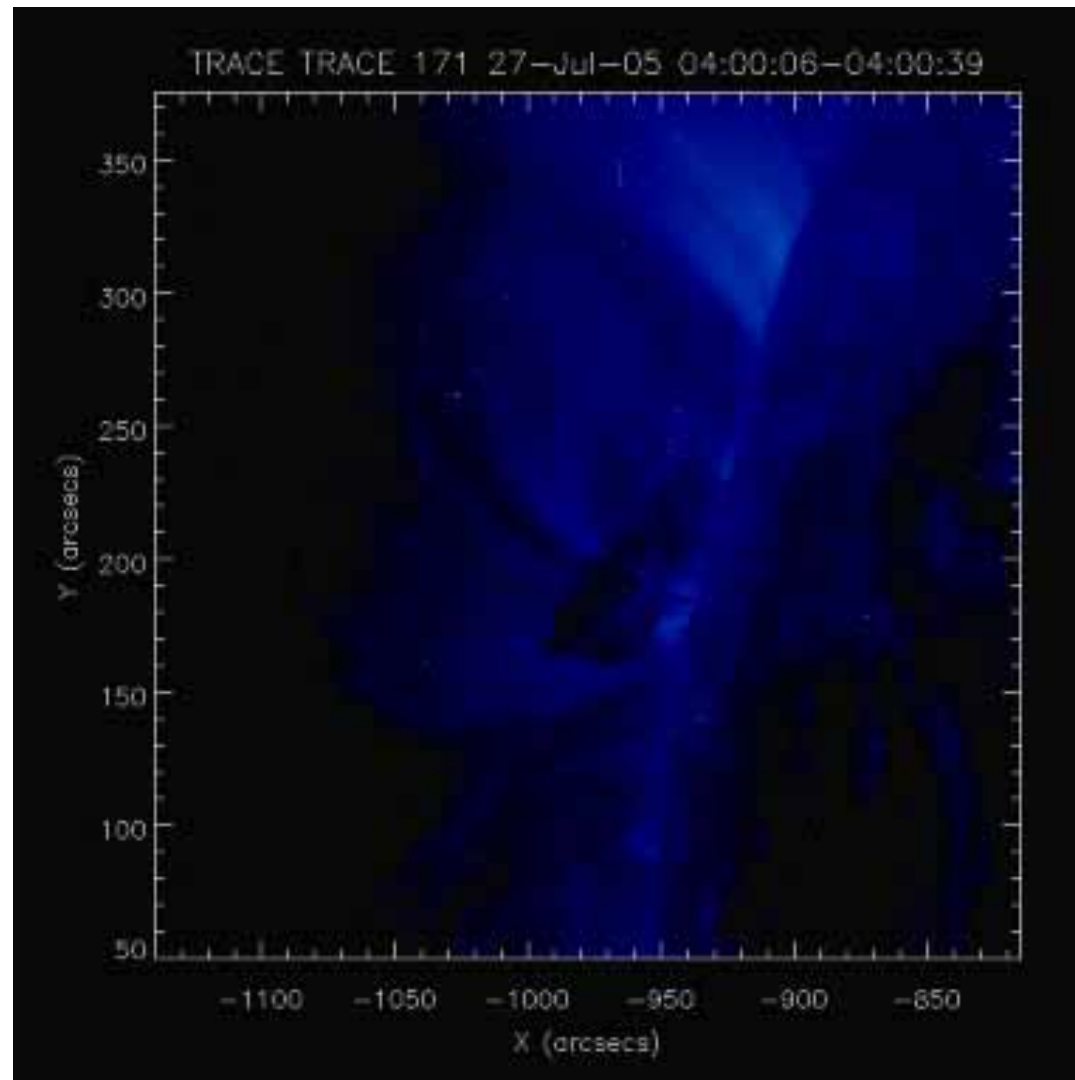
SMART T1 (H Center)



GOES/SXI

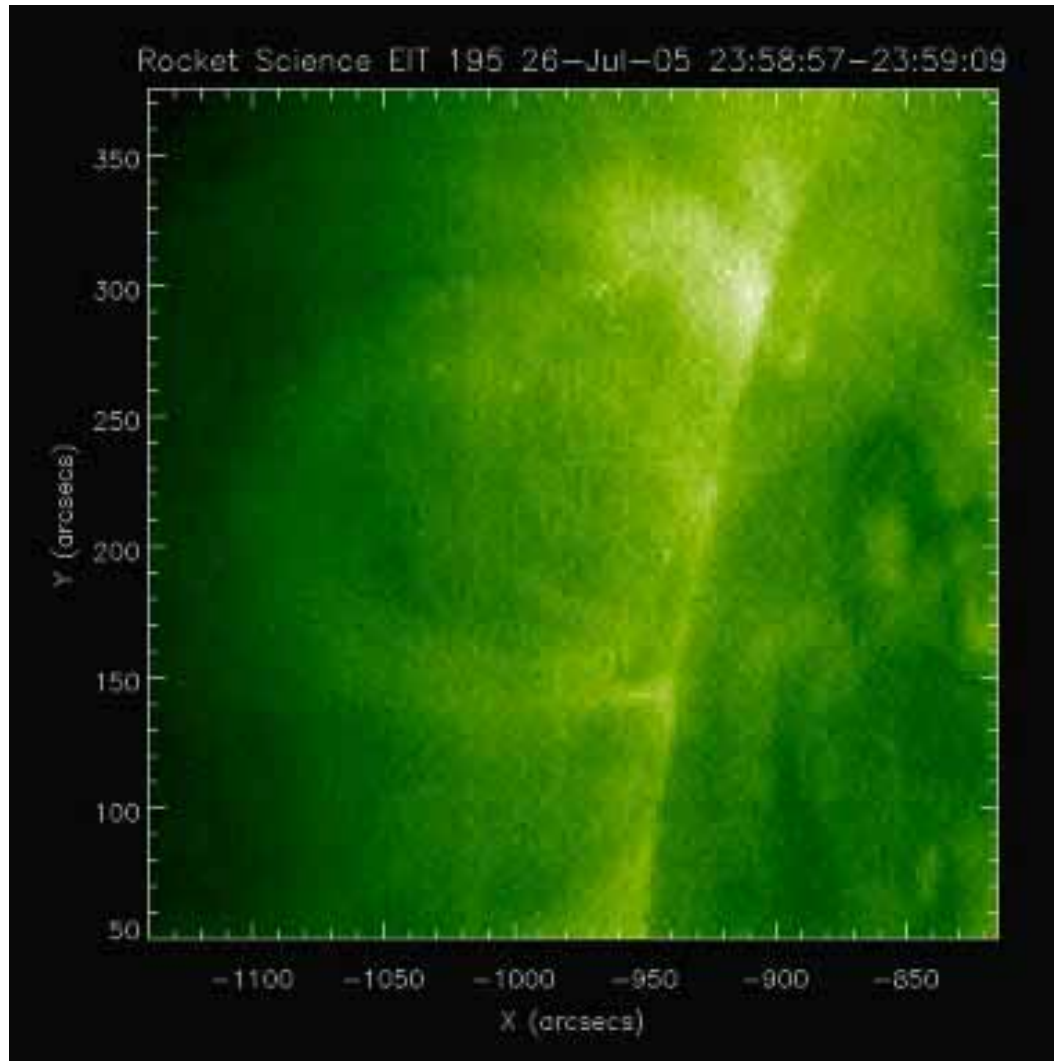


TRACE 171



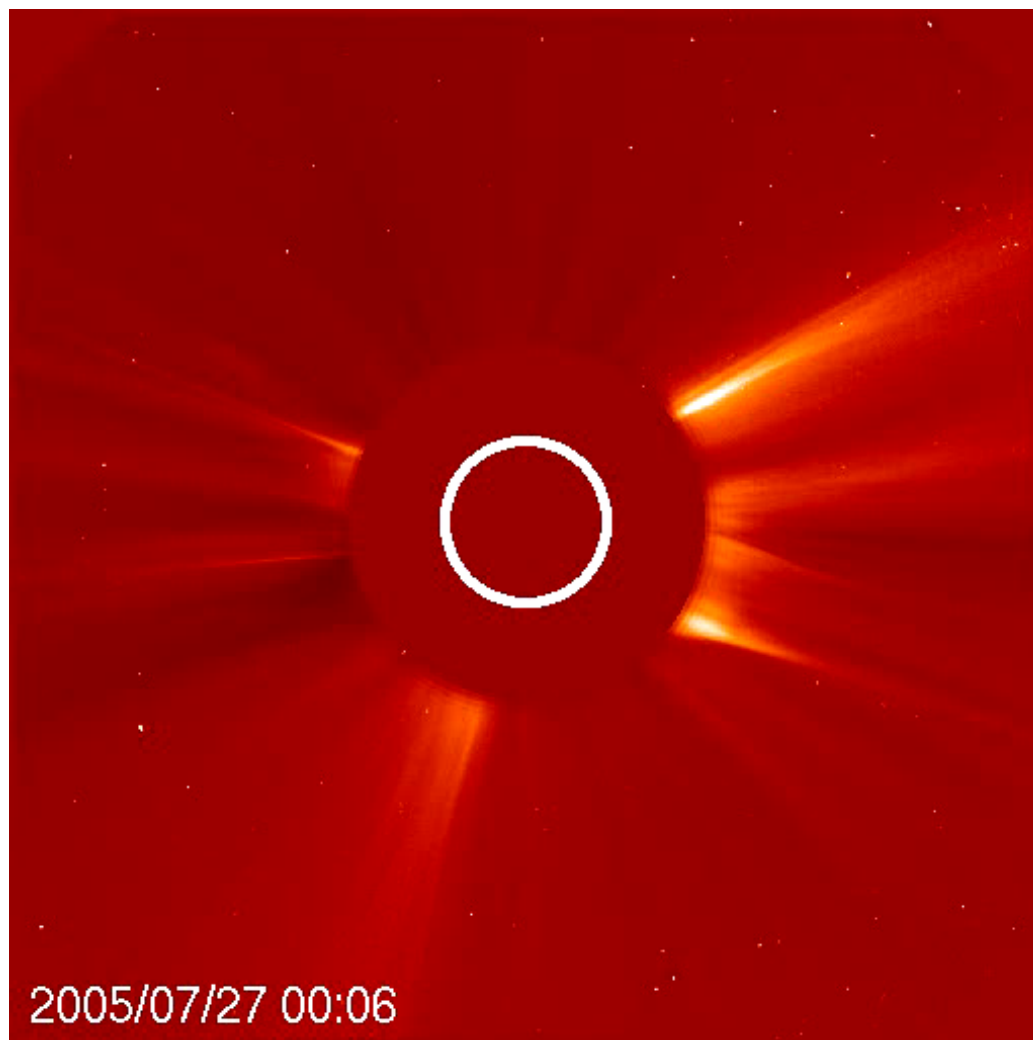
目次

SOHO/EIT 195



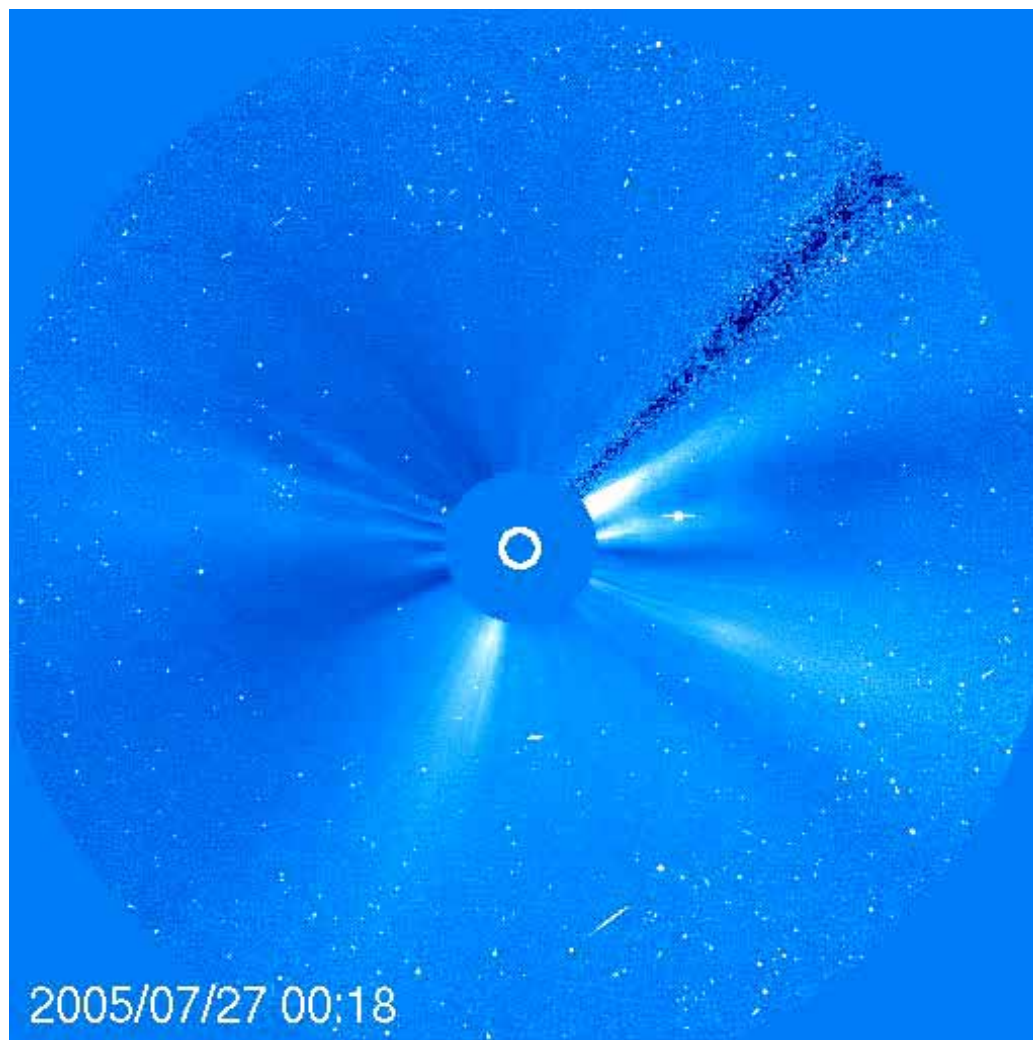
目次

SOHO/LASCO (C2)

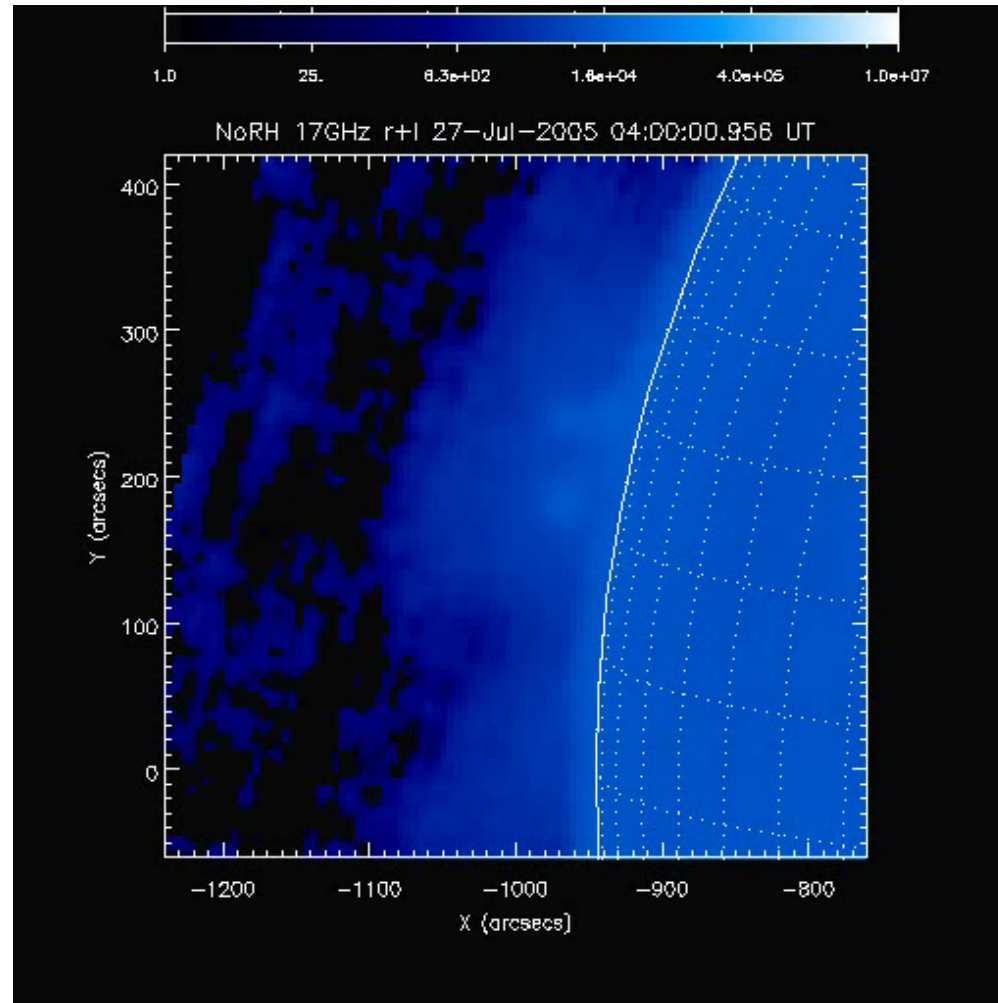


目次

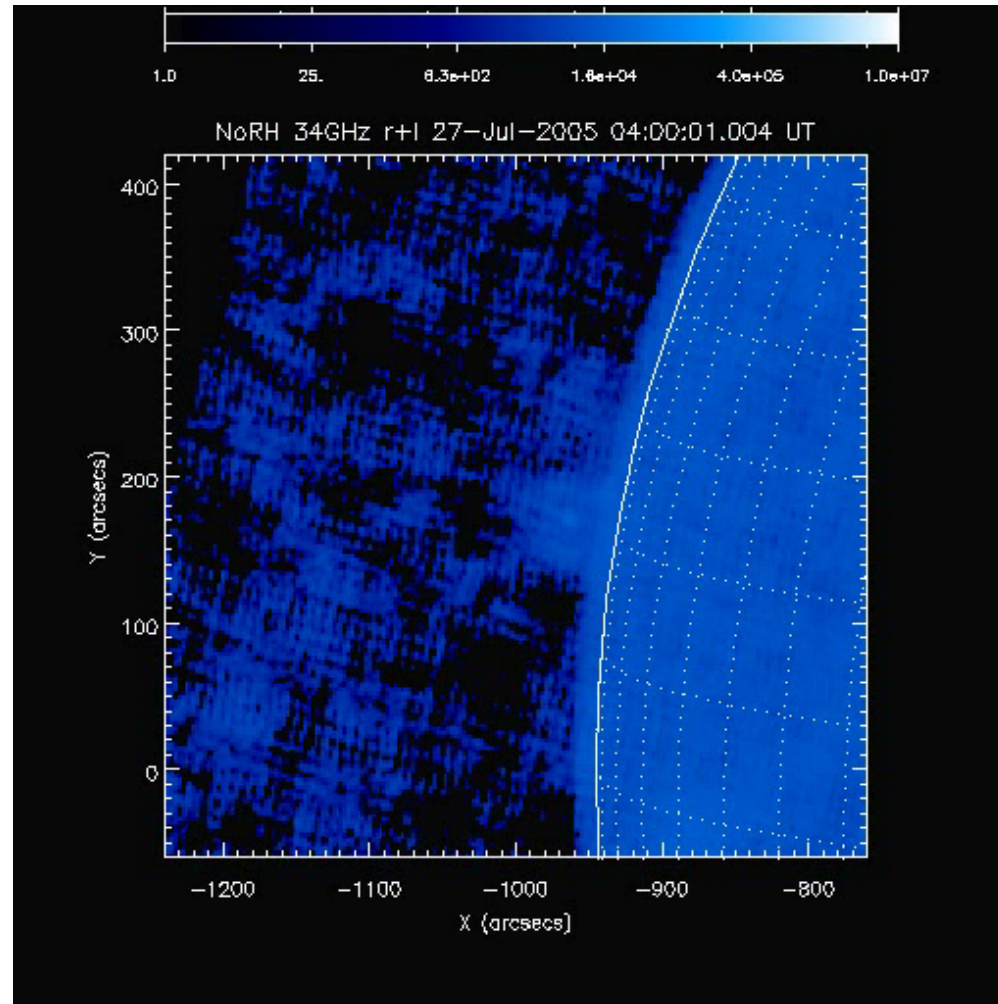
SOHO/LASCO (C3)



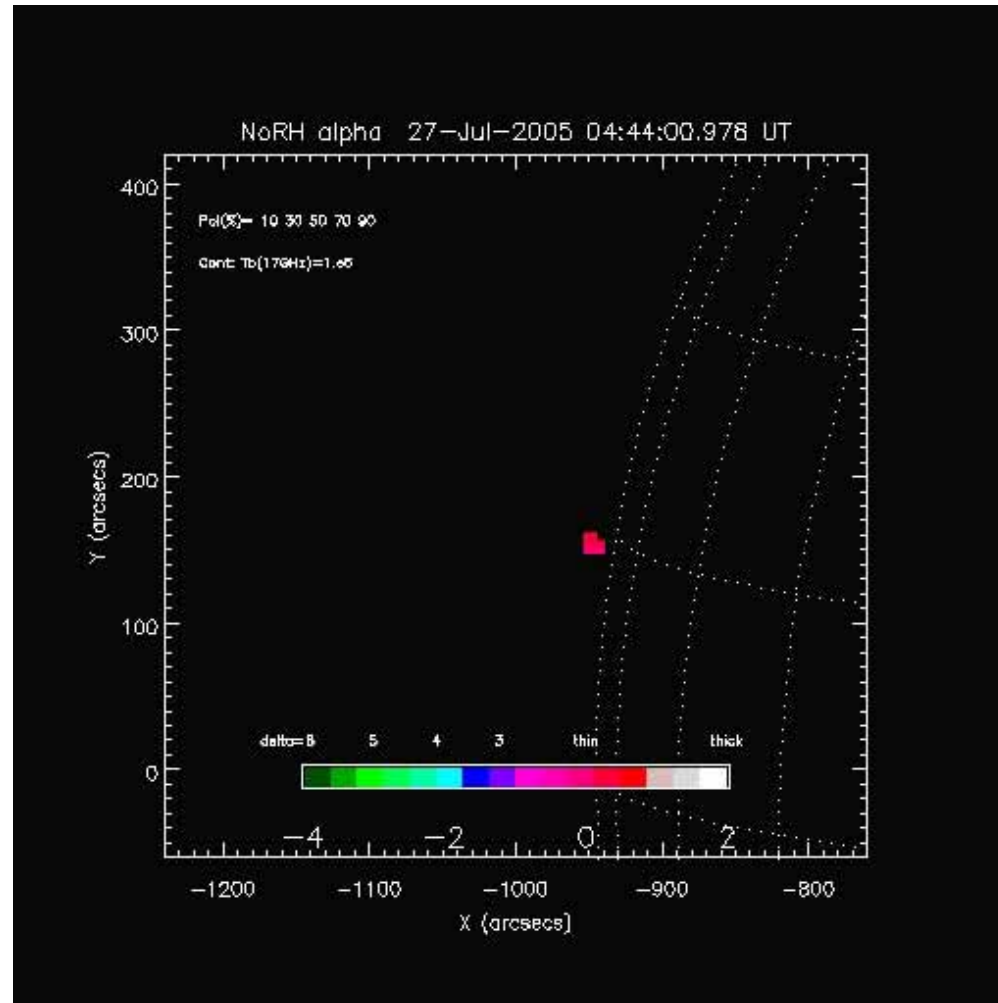
NoRH 17GHz r+l



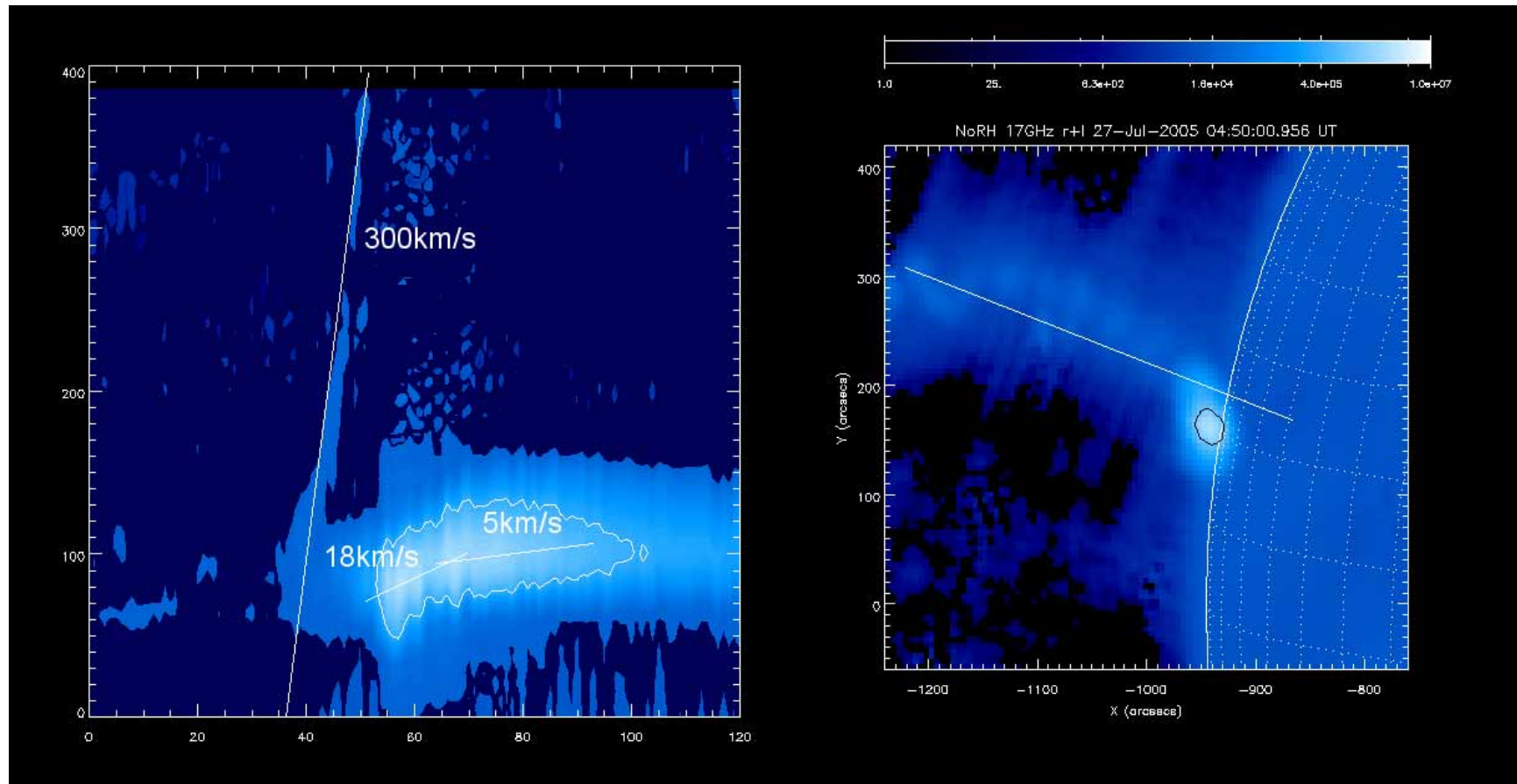
NoRH 34GHz r+l



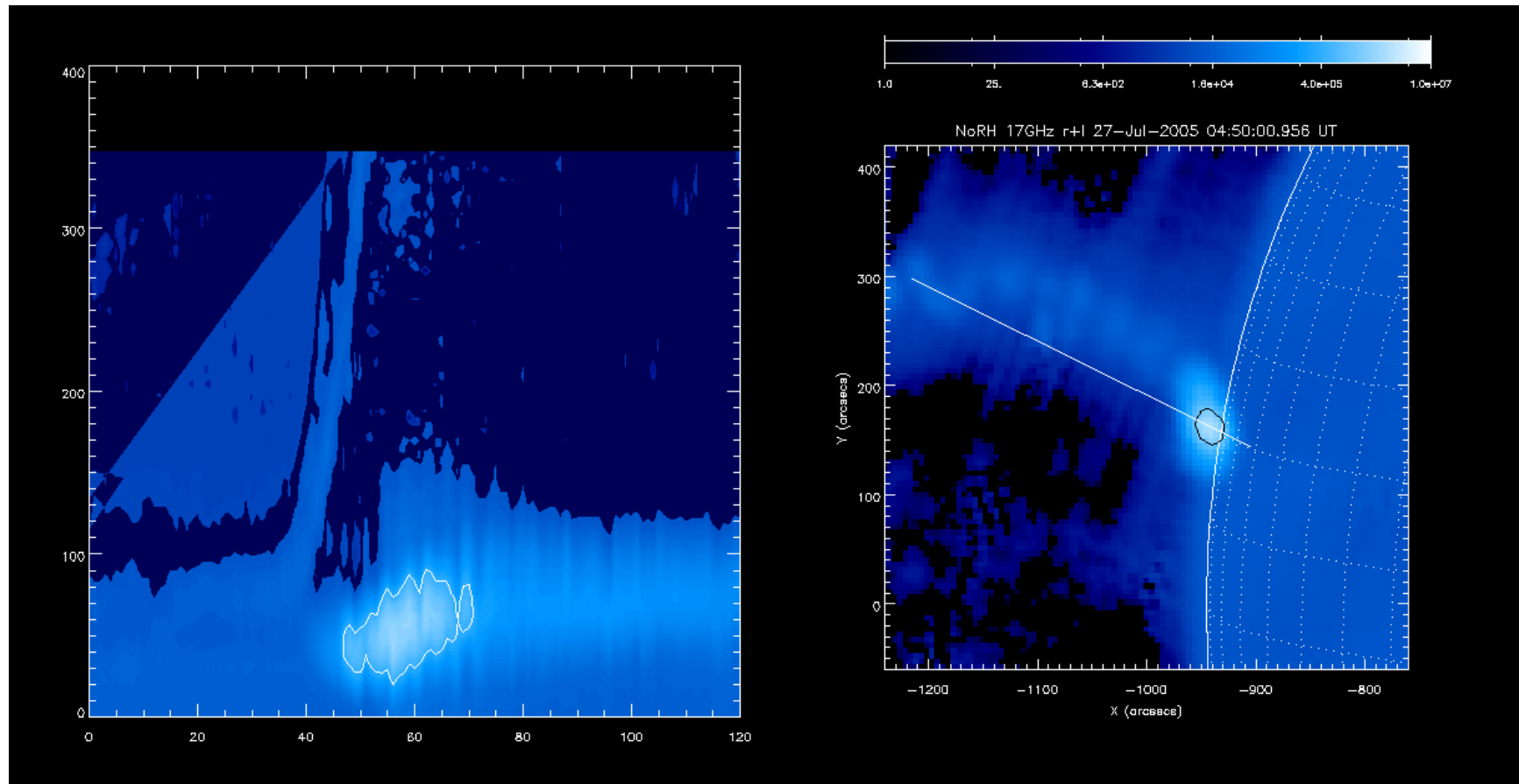
NoRH alpha



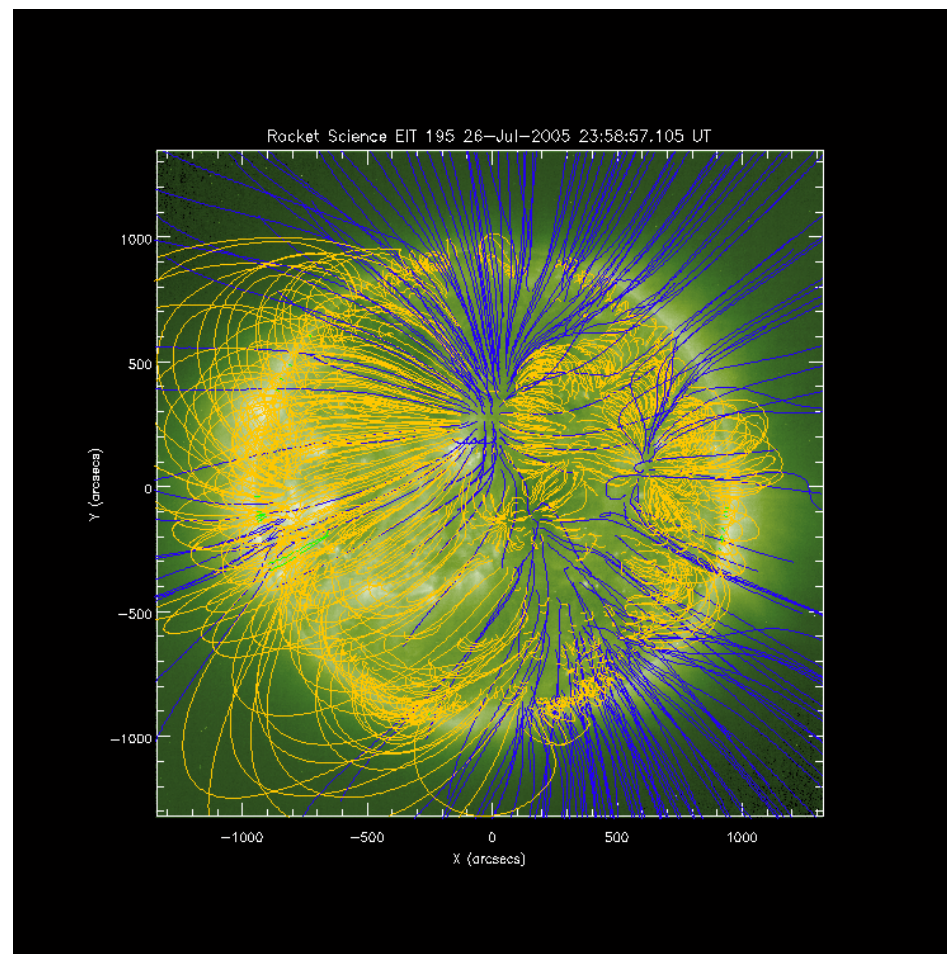
NoRH 17GHz timeslice (1)



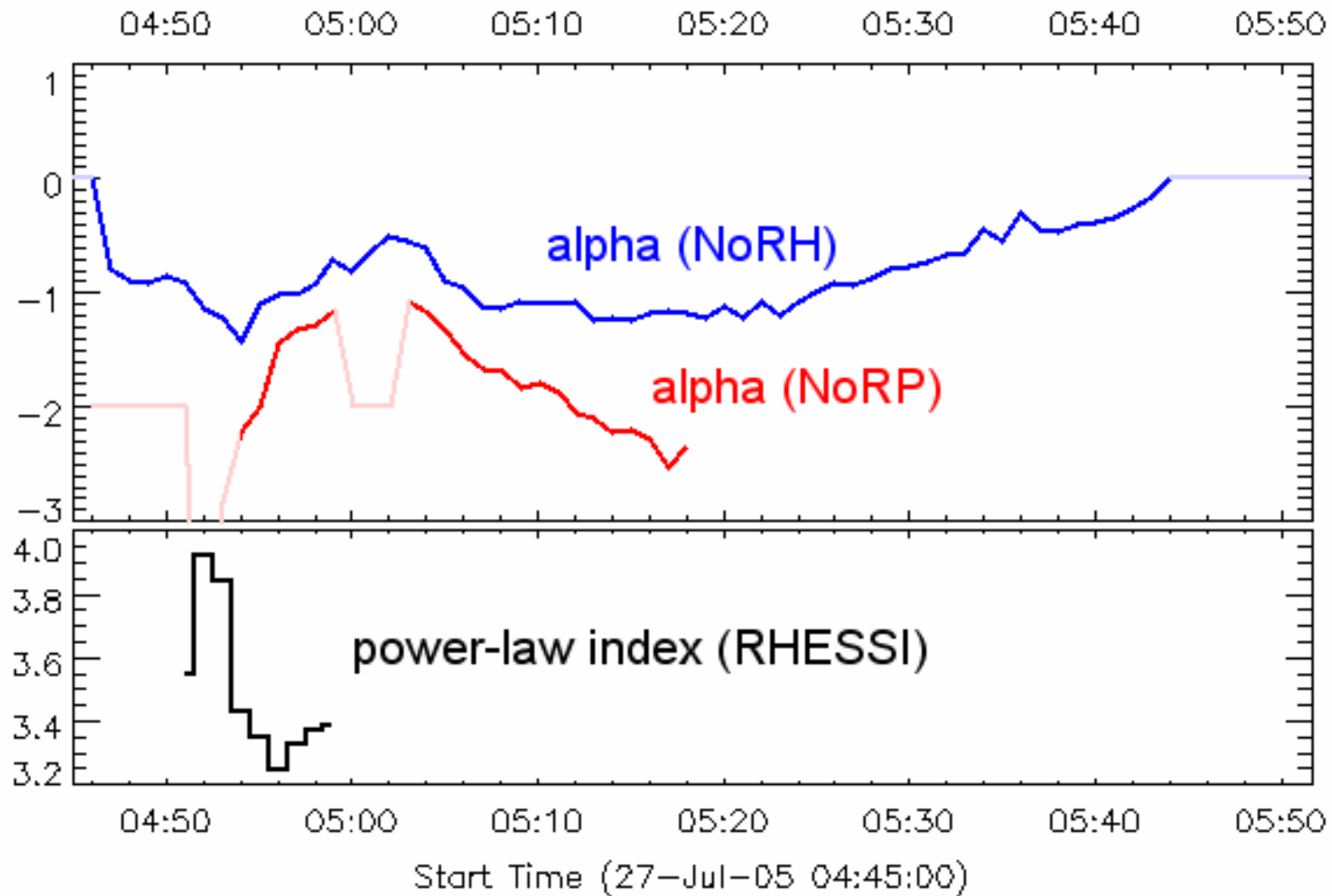
NoRH 17GHz timeslice (2)



コロナ磁場



NoRH · NoRP alpha RHESSI gamma



Rhessi observation

thermal(3~12keV) & Non-thermal(30~100keV)

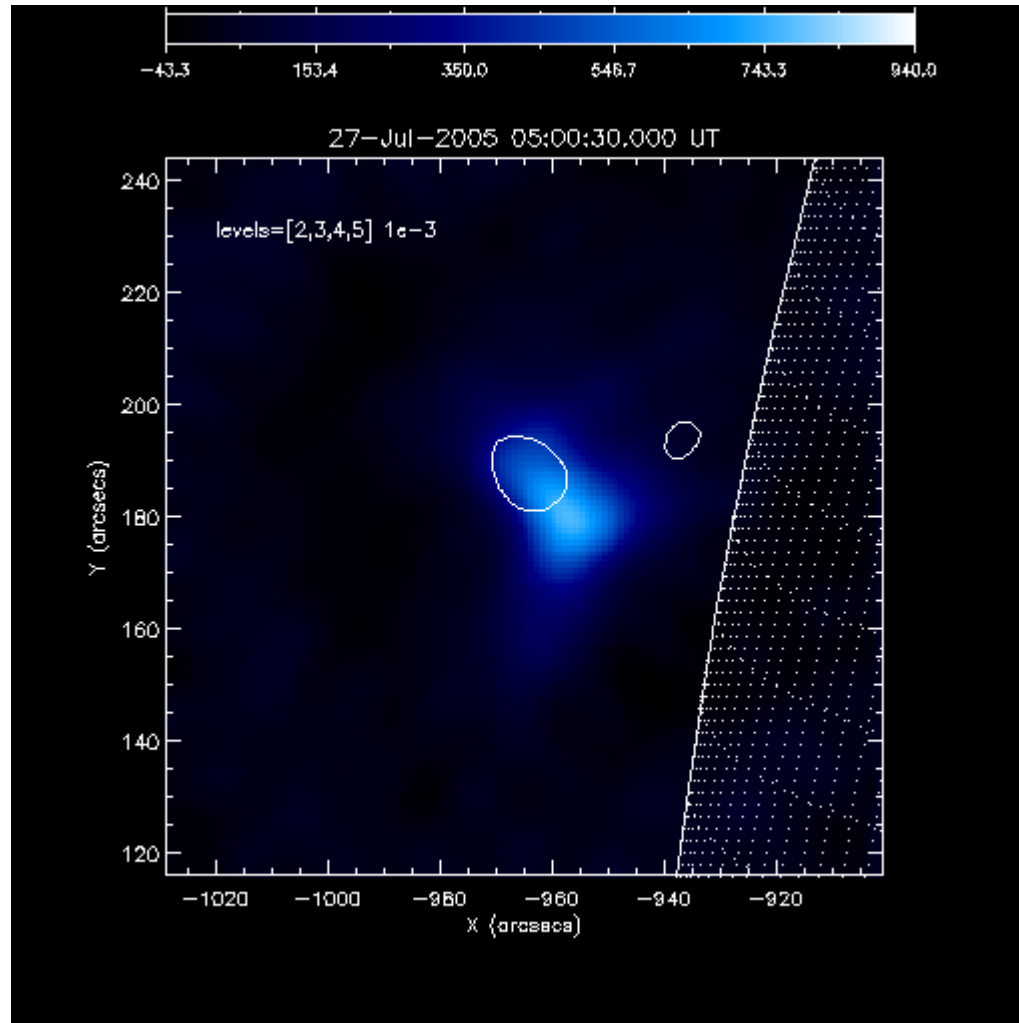
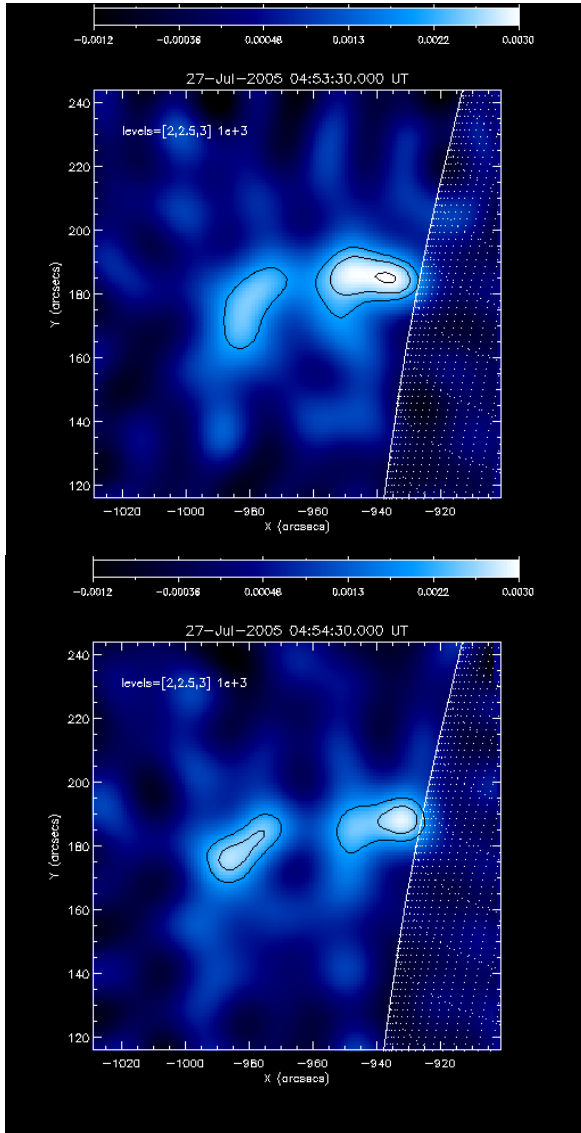


image: 3~12keV

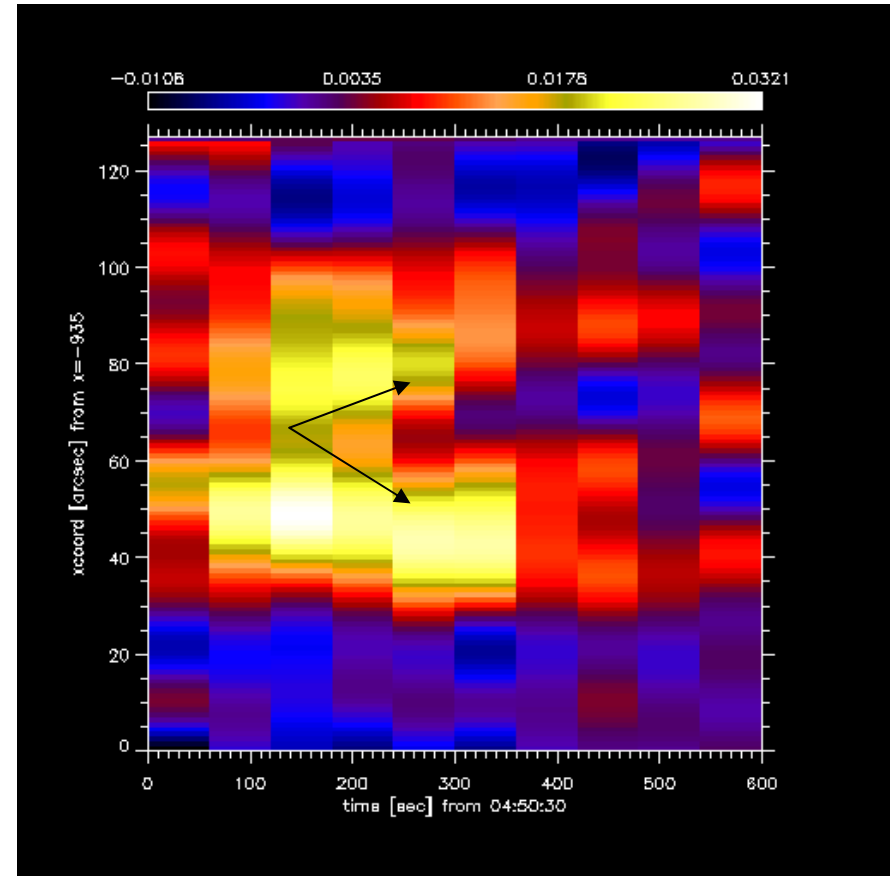
contour: 30~100keV

Motion of hard X-ray sources



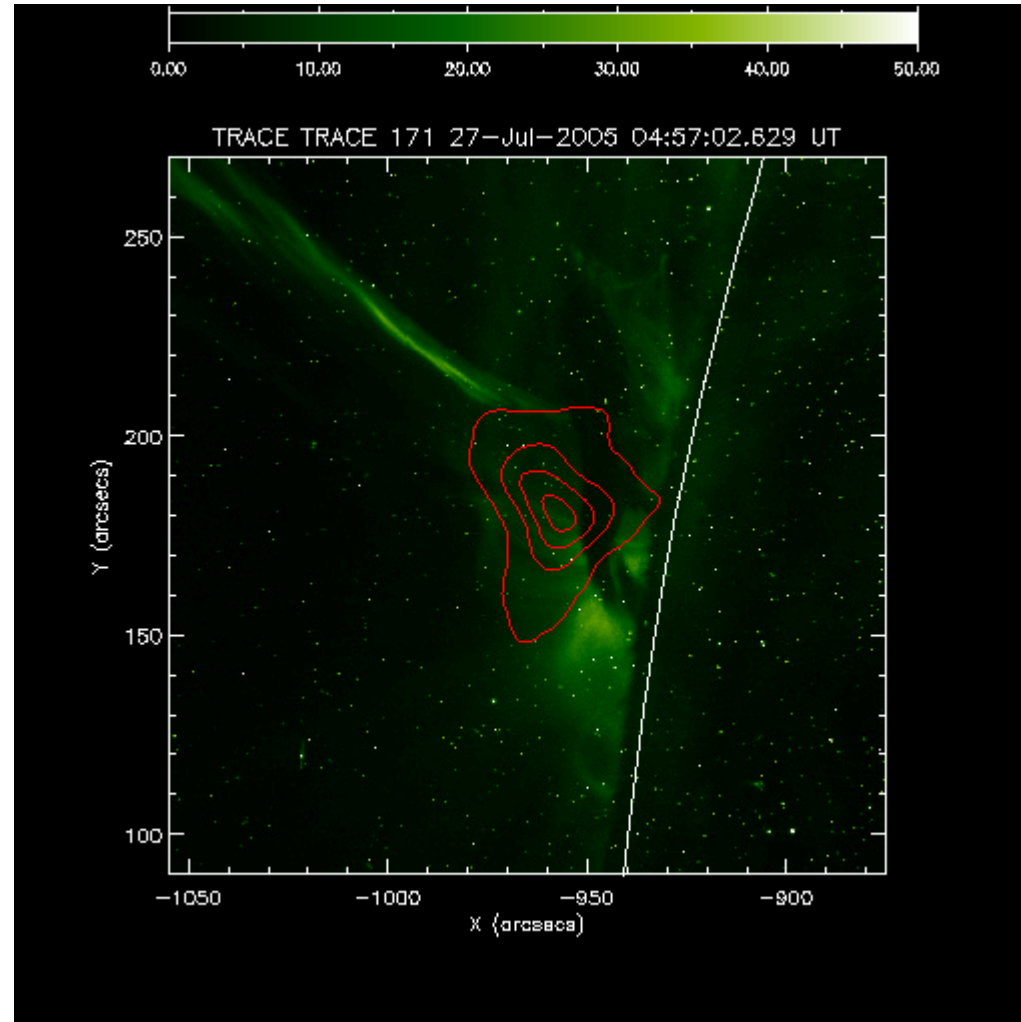
04:53:30

04:54:30

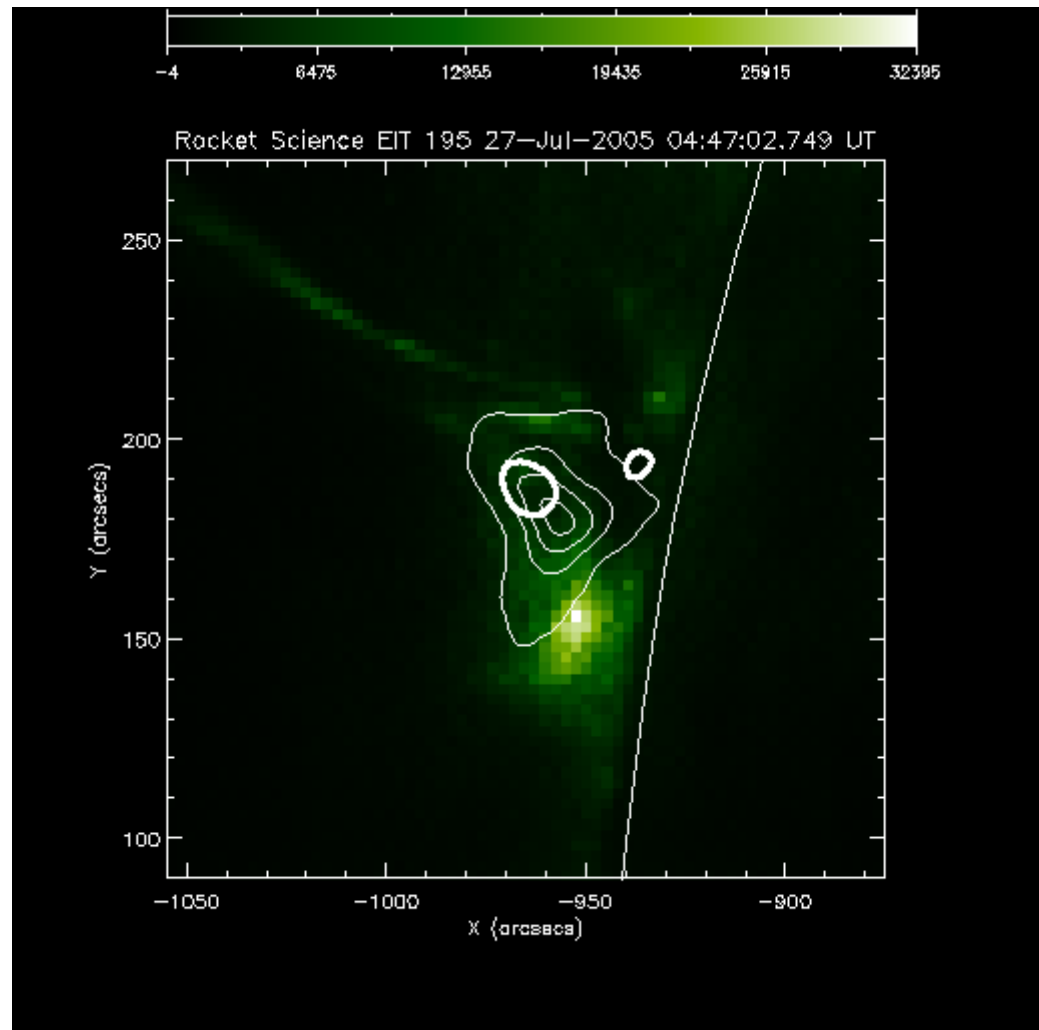


velocity~100[km/s]

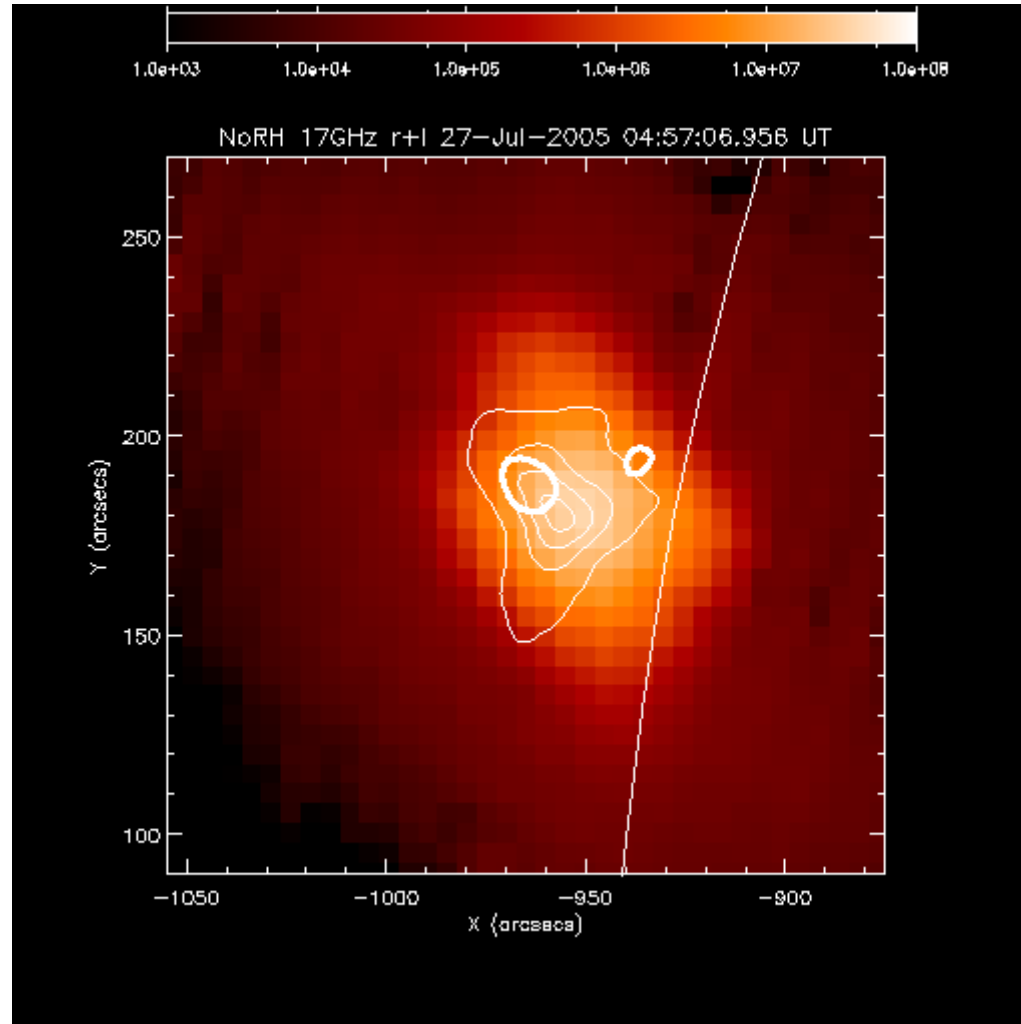
Rhessi & TRACE



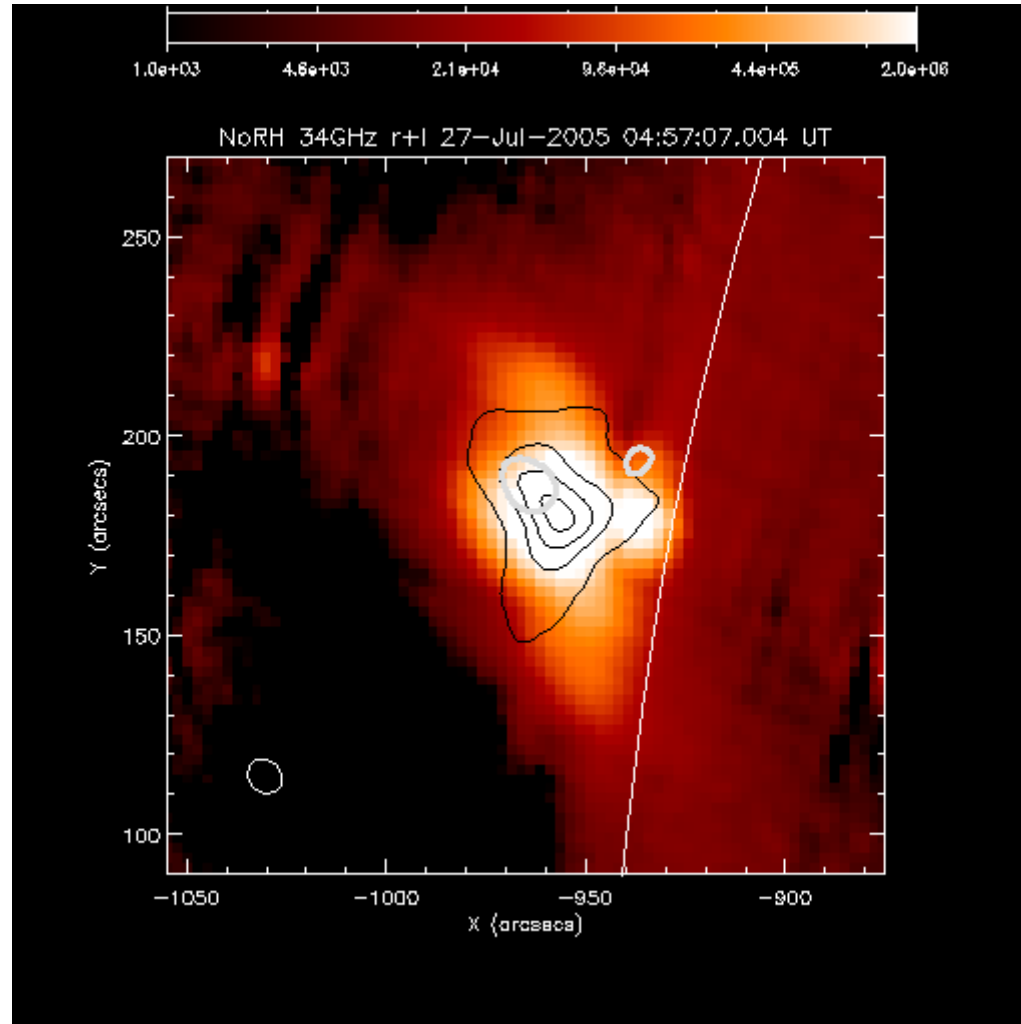
Rhessi & SOHO



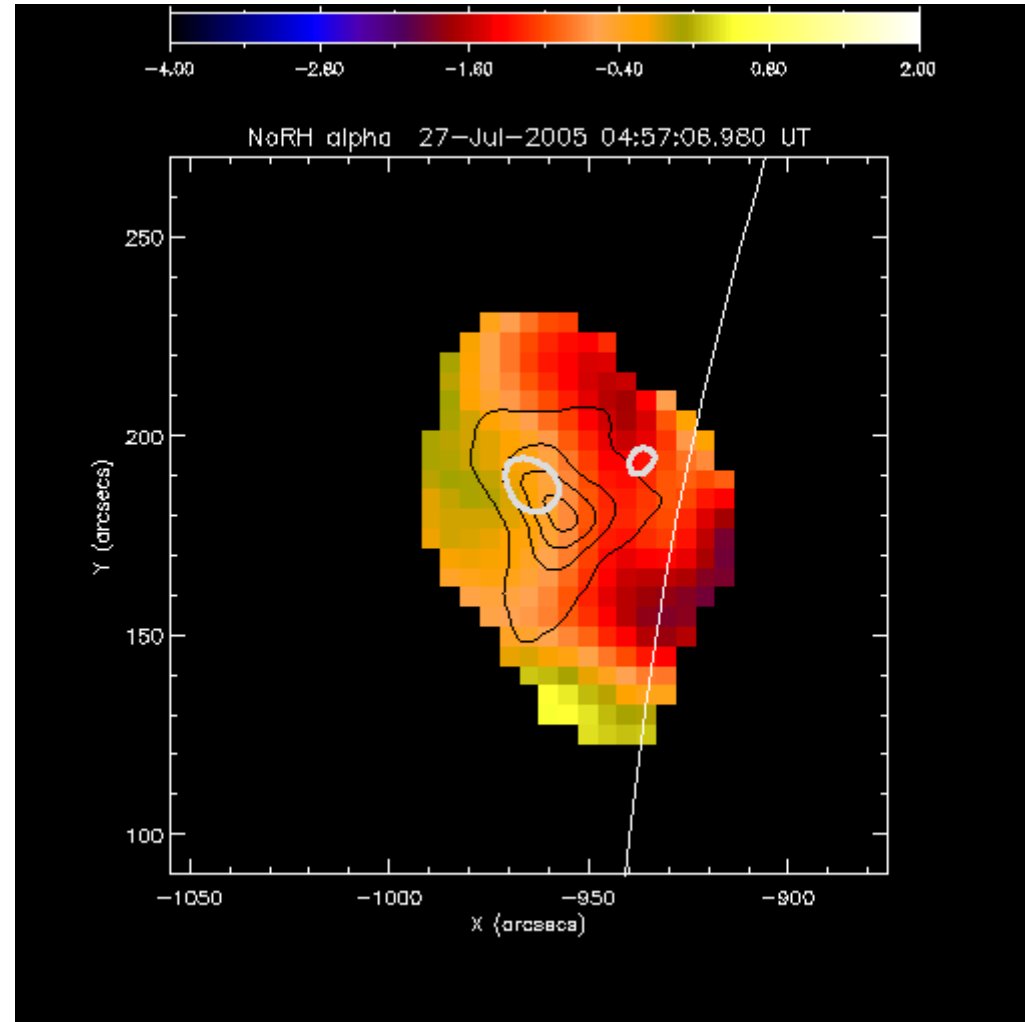
Rhessi & NORH 17GHz



Rhessi & NORH 34GHz



Rhessi & NORH



Imaging spectroscopy

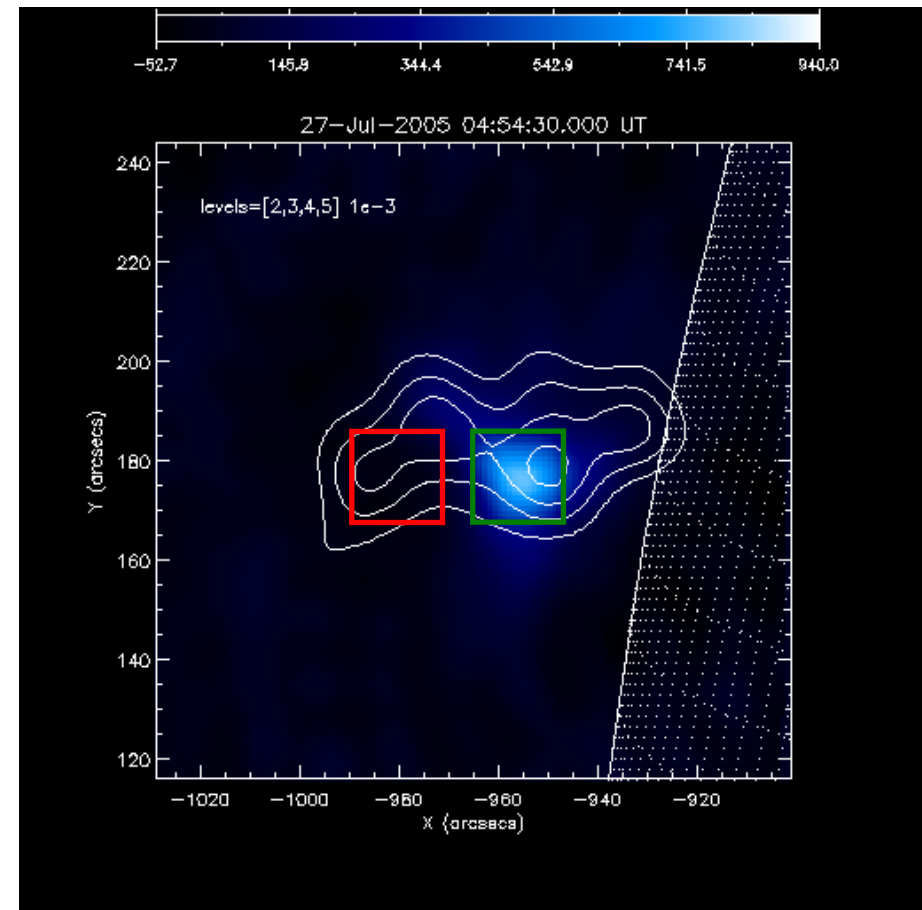
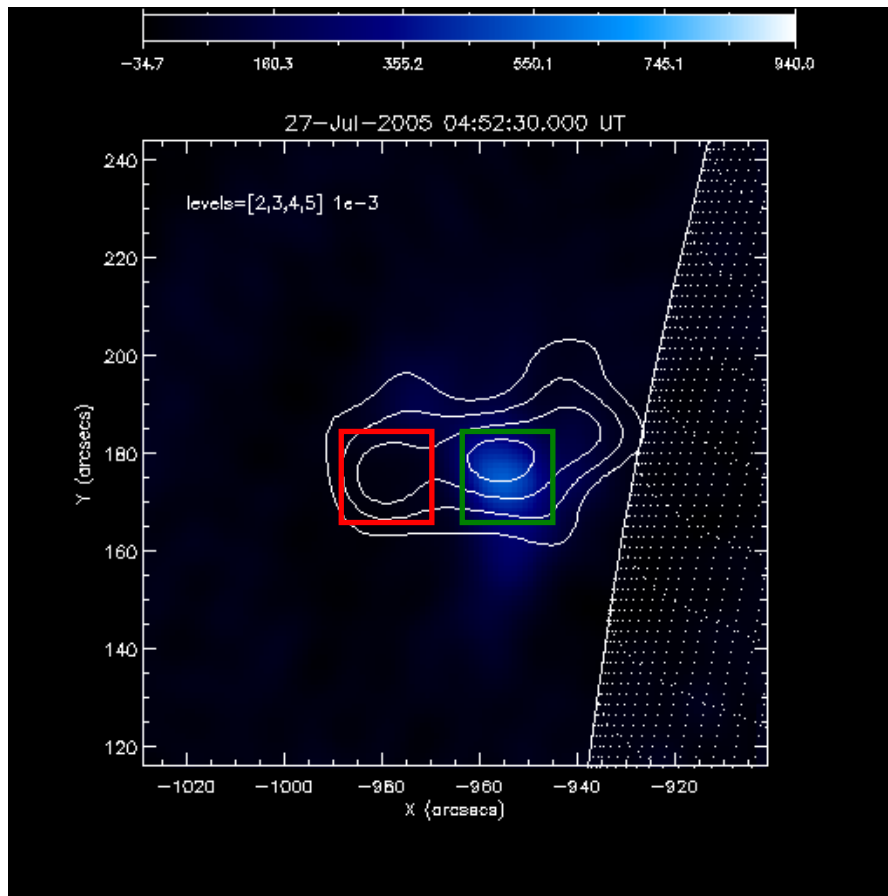
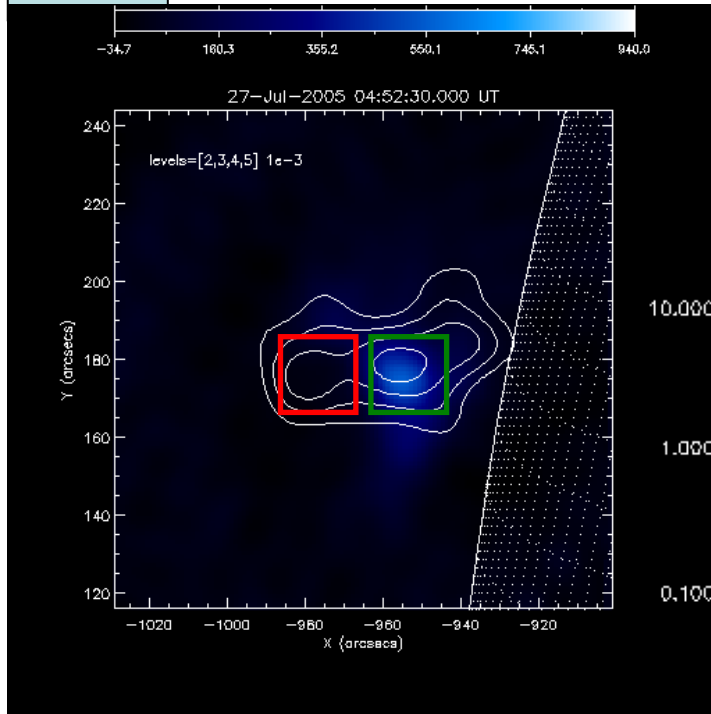


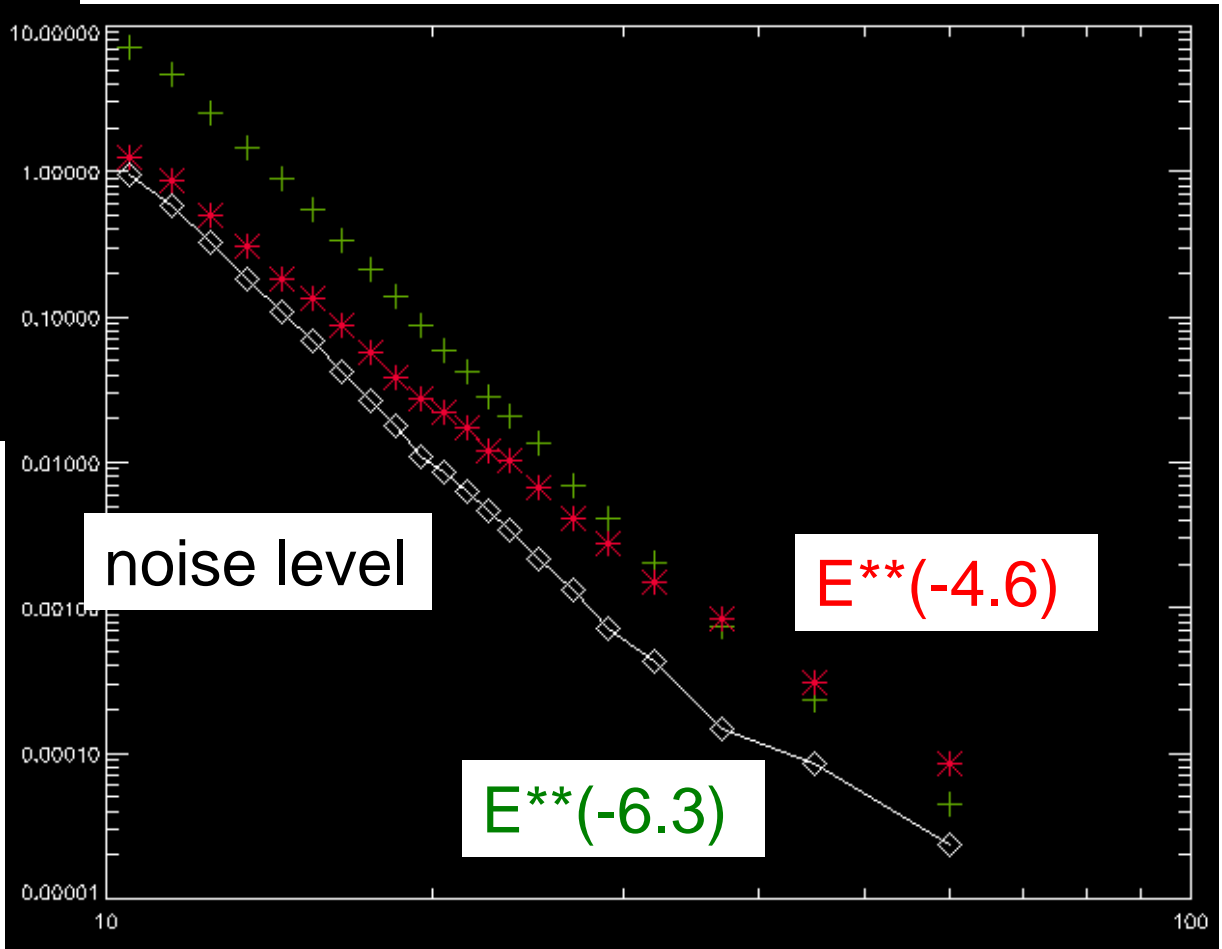
image 3~12keV (thermal)
 contour 30~100keV (nonthermal)

目次



10~24keV : 1keVbin
24~30keV : 2keVbin
30~34keV, 34~40keV,
40~50keV, 50~70keV

[photons/cm**2/sec/keV]



noise level

E**(-4.6)

E**(-6.3)

energy [keV]

The spectrum of both loop top sources shows nonthermal component !!

